

# WHAT IS GLOBAL IFS ALL ABOUT?

*Making Mass Timber Buildings Even Better*





A wide-angle photograph of a modern office interior. The ceiling is made of light-colored wooden planks with long, rectangular recessed lighting fixtures. The floor is a light-colored, polished concrete. In the foreground, there are several white, high-top stools with blue bases. In the background, there are rows of cubicles with white and blue partitions, each equipped with a computer monitor. Large windows on the right side of the office provide a view of a city and mountains in the distance.

# World-Class Solutions for Exceptional Environments

**Global Integrated Flooring Solutions®** is the leading provider of fully integrated, premium raised-access flooring solutions for high-performing, state-of-the-art environments in every building.

Our solutions are rooted in more than 30 years of proven expertise. They are built to last, easy to install and easy to manage. We work with you to optimize every project for your unique needs.

Global IFS® is headquartered in Kentwood, Michigan, with offices in Edison, NJ, and Toronto, Canada. The company was created as a merger among TecCrete® Flooring and Manufacturing, Hi Tech Data Floors and Camino.



A modern office interior featuring a curved reception desk with a dark wood base and a light-colored top. To the left is a brick wall. The floor is made of wide-plank wood. In the background, there are glass-walled offices and a staircase. The ceiling has exposed ductwork and modern lighting fixtures.

# The Integrated Flooring Solution

**Global Integrated Flooring Solutions®** are custom tailored to meet and adapt to your changing needs – combining industry-leading and field-proven raised access flooring with underfloor air distribution (UFAD), plug & play power systems, hidden WiFi and unique finishes that create an environment that is beautiful, highly adaptable and optimized for your client.



## The Fully Integrated Solution



### World class solution for exceptional environments in every building

Trusted partner every step of the way.  
Beautiful spaces with a clean look and feel.

High performance system, built to last.

Highly adaptable environments.

Improved air quality.

Optimizing your building space.

Affordable installation and operation.

Energy efficiency and responsible manufacturing.

Proven solution for ever building.

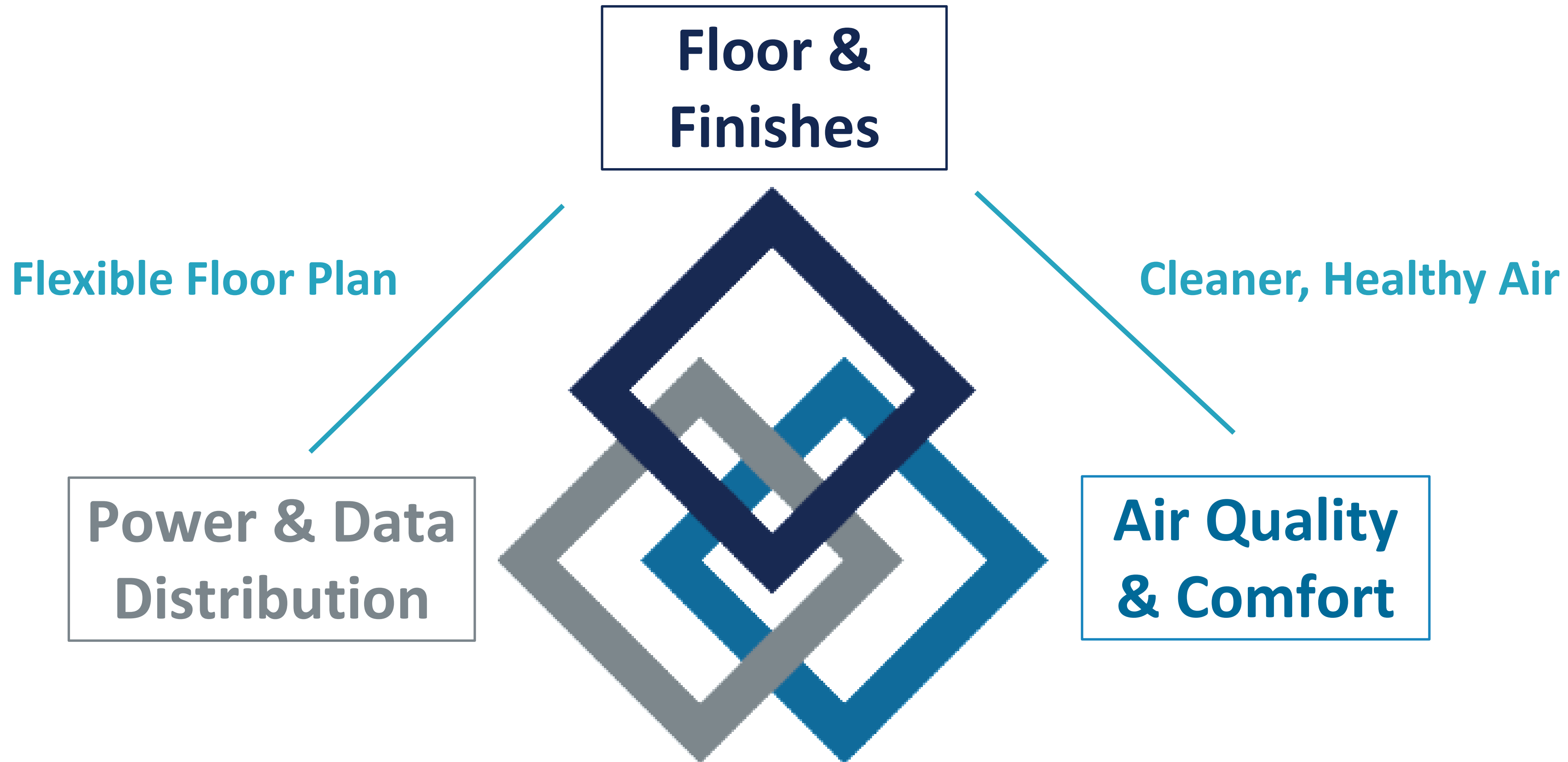


Raised Flooring   Underfloor Air   Modular Power   WiFi   Finishes



# The Fully Integrated Solution

“IFS Building”



# The Fully Integrated Solution

## Floor & Finishes

### TecCrete Access Floors

- Solid, stiff and quiet
- Five strength systems
- Virtually any height available
- Bare concrete walking surface or hundreds of floor finish option



### Floor & Finishes



**MAGNA-LOCK**  
FLOORING

- Wood Plank
- LVT
- Terrazzo



*Magnetic floor finishes*



# The Fully Integrated Solution

## Floor & Finishes

*Elevate™ Dry Lay Porcelain*



Floor & Finishes



*Clear sealed TecCrete panels*



*Magnetic wood planks*



# The Fully Integrated Solution

## Air Quality & Comfort

### Complete Underfloor Air (UFAD) System Solutions

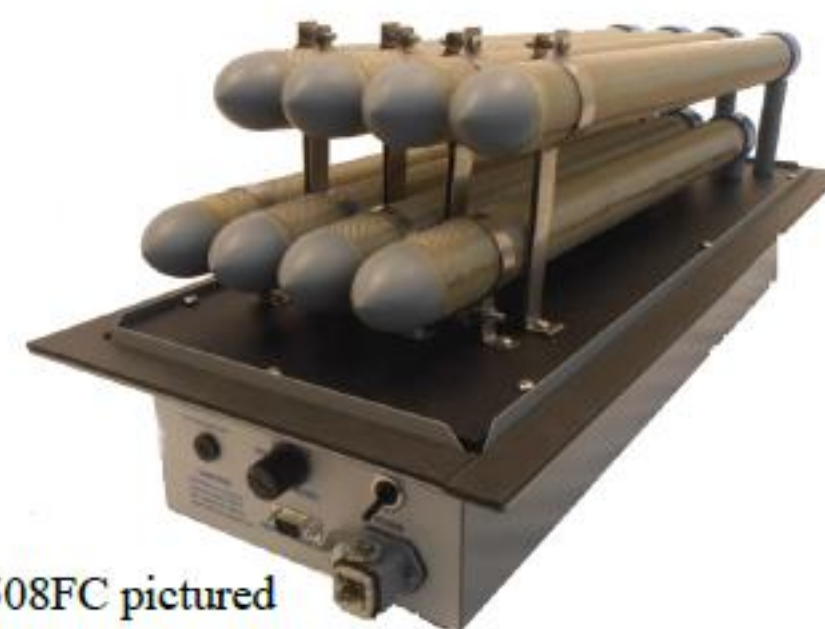
- Self-contained, pre-engineered, modular air towers
- Air distribution products – diffusers, perimeter systems
- BPI air purification technology



*Manual/automatic floor diffusers*



*Modular Air Towers*



*AtmosAir™ BPI Units*



*Perimeter heat/cool units*



Air Quality  
& Comfort



# The Fully Integrated Solution

## Air Quality & Comfort



*Floor Diffusers*



*Perimeter heat/cool units*



Air Quality  
& Comfort

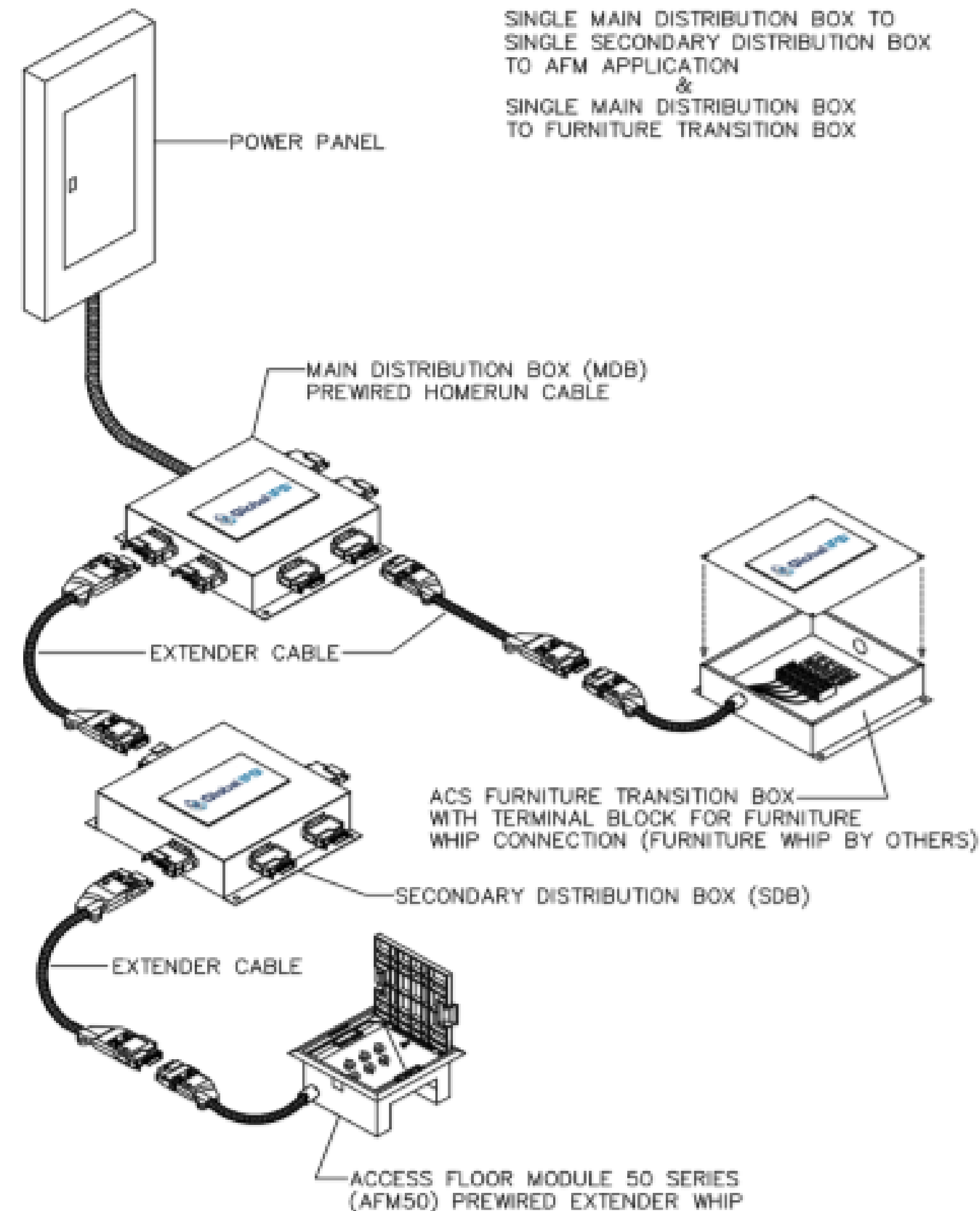


# The Fully Integrated Solution

## Power & Data Distribution

### Plug & Play Power System

- Modular, pre-engineered underfloor electrical system
- Extremely flexible and easy to move/change
- Complies with International Mechanical Code, NEC, NFPA code requirements
- Data and WiFi components too!



Power & Data  
Distribution





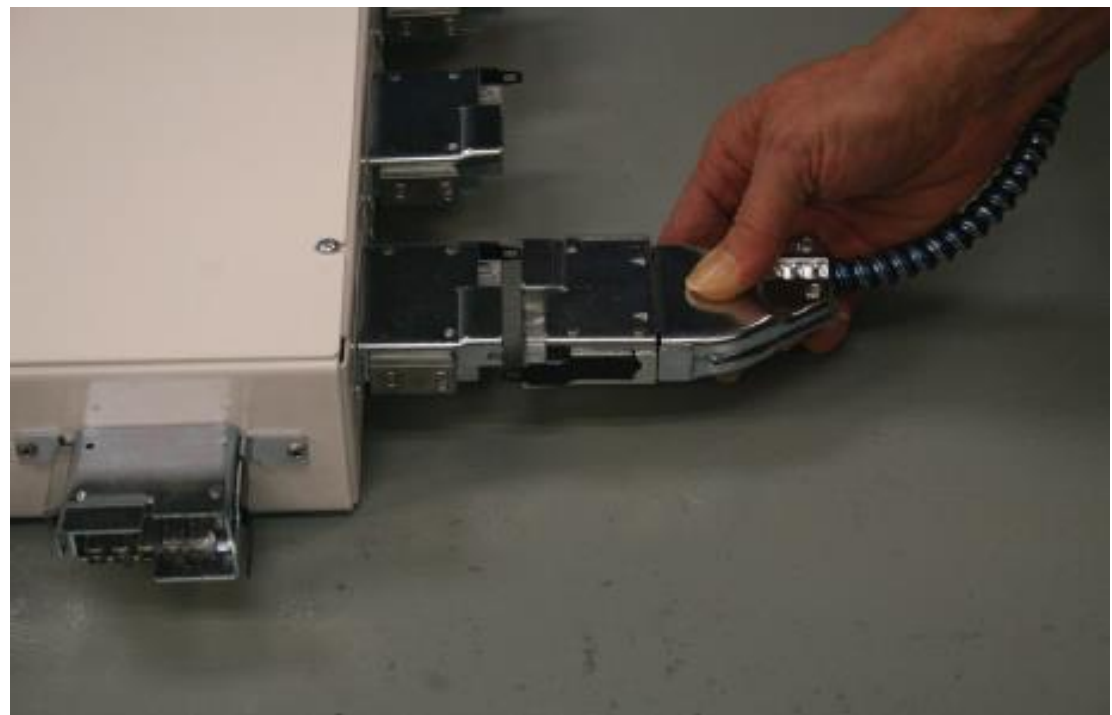
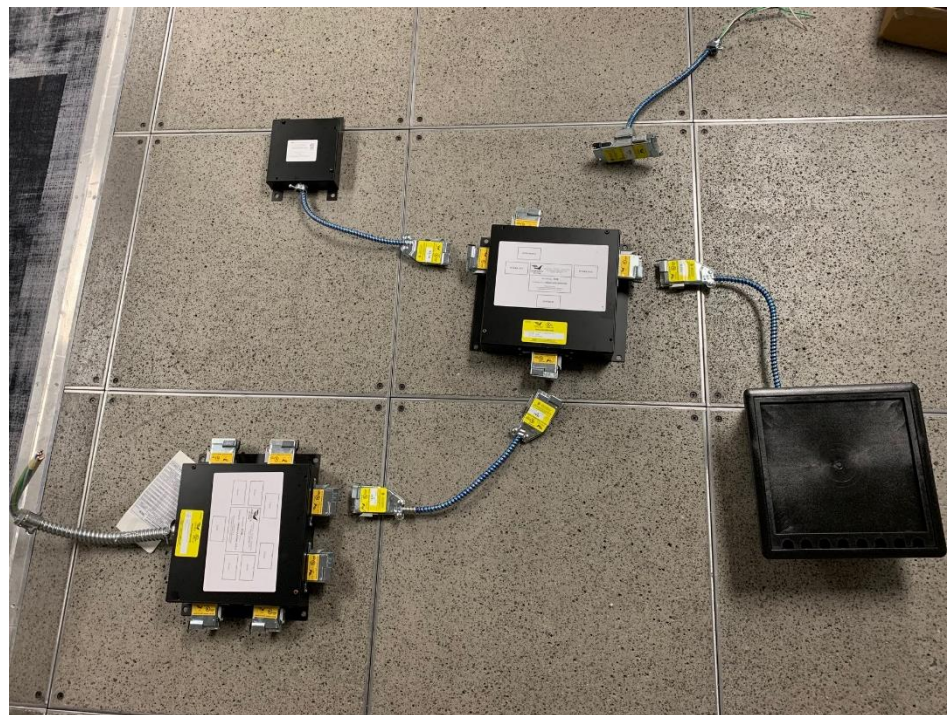
# The Fully Integrated Solution

## Power & Data Distribution



*Plug & Play Power*

Power & Data  
Distribution



*Hidden WiFi*





# Q: WHO IS GLOBAL IFS?

A: Click Here and See Us in Action!!!



<https://www.youtube.com/watch?v=fg8o9LBD0sg>