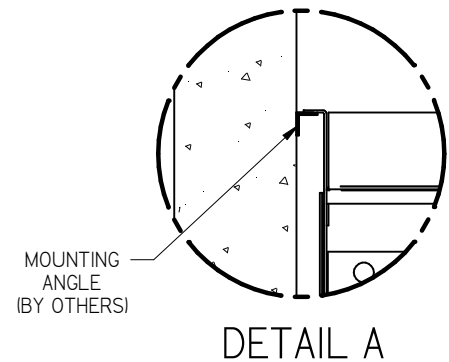
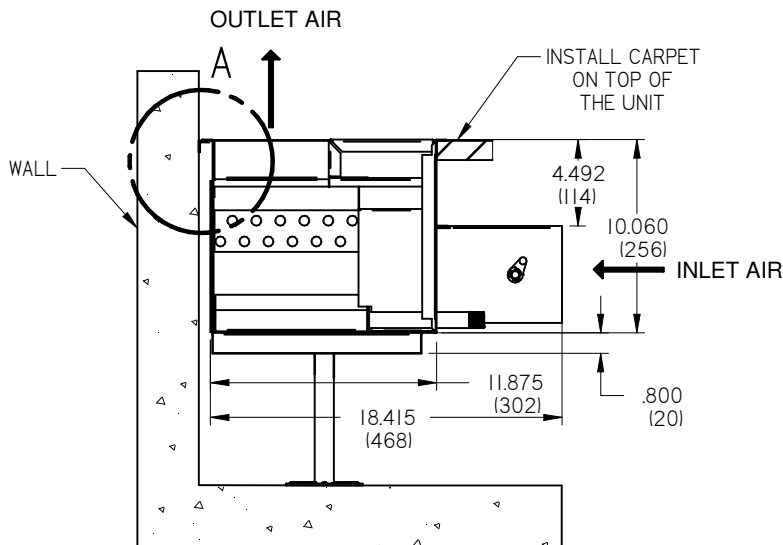


PARTS LIST	
ITEM	PART NAME
1	TOP COVER
2	MOTORIZED VAV DAMPER
3	24 VAC ACTUATOR (OPT)
4	2 PIPE WATER COIL
5	5/8" COPPER CONNECTION
6	DRAIN PIPE
7	REMOVABLE ENDCAP
8	PEDESTALS (ORDERED SEPARATELY)

ROUGH OPENING NOM L X W	UNIT SIZE	PEDESTAL BRACKET QTY	GRILLE SIZE
<input type="checkbox"/> 48 X 12 (1219 X 305)	47 3/4 X 11 1/4 (1216 X 302)	2	47 3/4 X 5 3/4 (1213 X 146)
<input type="checkbox"/> 72 X 12 (1829 X 305)	71 1/4 X 11 1/4 (1826 X 302)	3	71 3/4 X 5 3/4 (1822 X 146)
<input type="checkbox"/> 96 X 12 (2438 X 305)	95 1/4 X 11 1/4 (2435 X 302)	4	95 3/4 X 5 3/4 (2432 X 146)


FEATURES:

- 16 GA Steel Construction, Black Finish
- Comes with plenum rated control cable 25ft length. Optional lengths of 15ft or 35ft available
- Multiple modular connections options for field daisy chaining between terminals
- Comes with stainless steel drain pan
- 2 pipe hot/cool water coil
- Control wiring and low voltage daisy chain wiring by others
- Continuous linear grille available in anodized finish or painted finish to match curtain wall mullions
- Not to be stepped on until the raised access floor and perimeter has been built around it for lateral support

NOTE: LBG ORDERED SEPARATELY

LBG ACCESSORIES REQUIRE SPECIAL CONFIGURATIONS

Project Name and Number:

 Description: **PBT - Perimeter Beam Terminal (2-Pipe)**

Engineer:

 Submission
Date:

 PROPRIETARY AND CONFIDENTIAL
 THE INFORMATION CONTAINED IN THIS
 DRAWING IS THE SOLE PROPERTY OF
 Global IFS. ANY REPRODUCTION IN PART
 OR AS A WHOLE WITHOUT THE WRITTEN
 PERMISSION OF Global IFS IS PROHIBITED

Dwg Release: 272699 Sheet: 1 Size: Letter