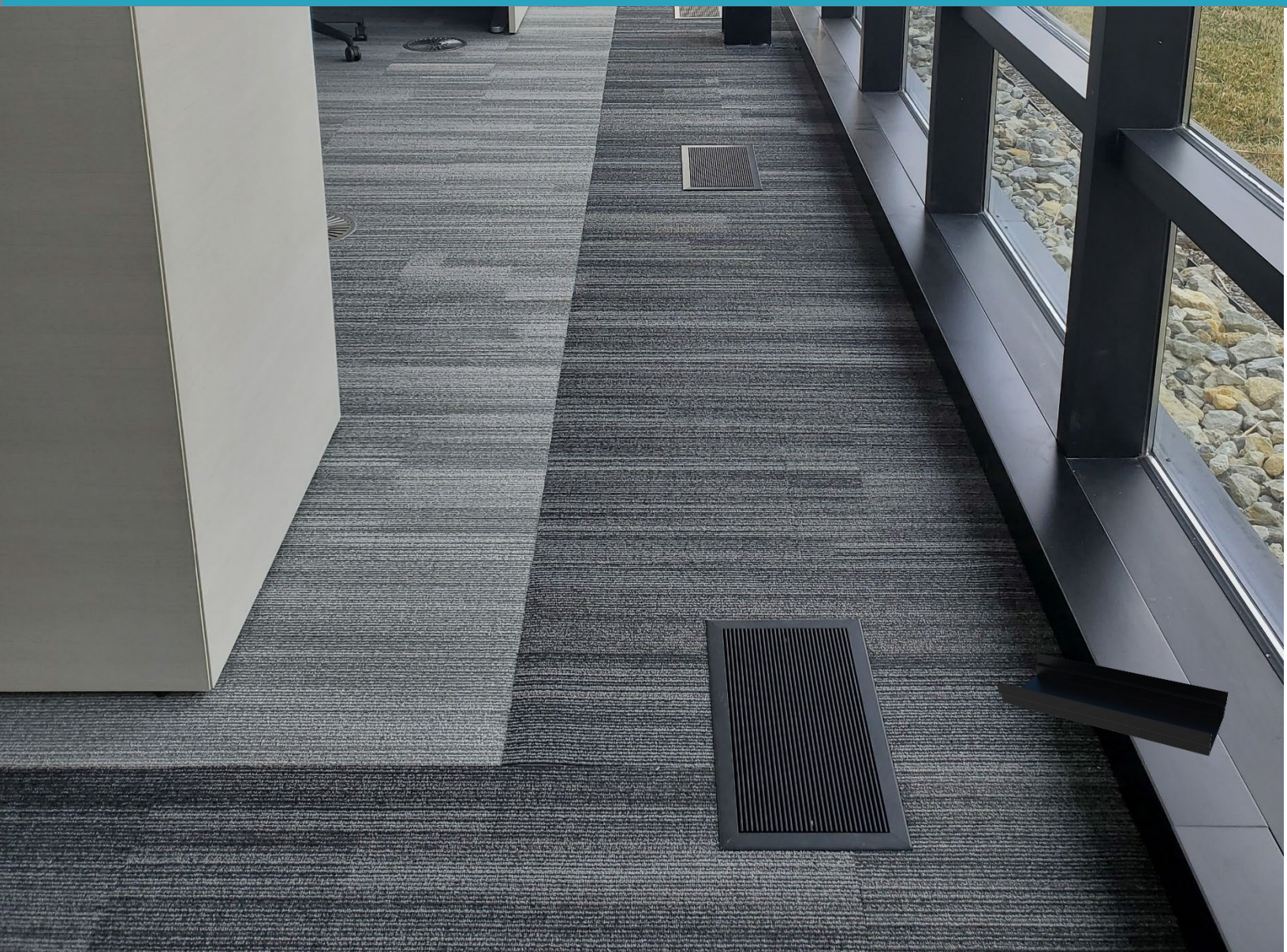




GLOBAL IFS[®]

Underfloor Air Distribution System

Trough Blank Off (TBO)



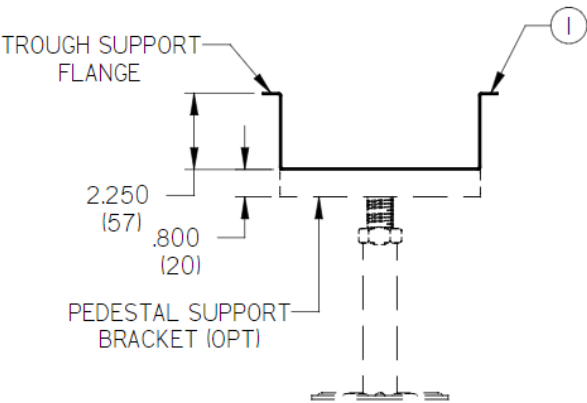
SYSTEM OVERVIEW

The Trough Blank Off (TBO) can be used to create a continuous-grille look with underfloor plenums and terminals such as the Linear Ducted Plenum (LDP), Linear Bar Terminal (LBT), and Perimeter Natural Convection Terminal (PNT). Quickly removable endcaps on the plenums and terminals make installation of the TBO very simple. The TBO can be used in flanged and flangeless applications, and can be ordered with pedestal brackets

Features

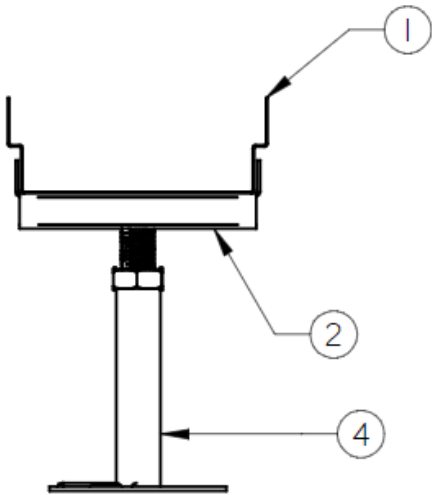
- Connects 2 terminals to create a continuous look
- Constructed of 22 ga. steel painted black (B17)
- Available for use with flanged and flangeless grilles
- Pedestal brackets available, shipped loose
- Shipped with connector plates for joining and sealing with plenums and terminals

Floor Tile Support-Flanged Trough

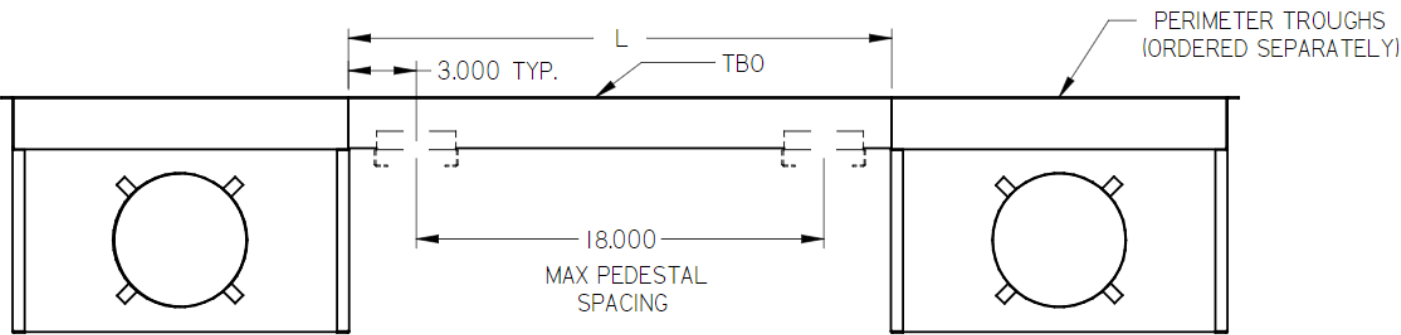


PARTS LIST	
ITEM	PART NAME
1	TROUGH
2	PEDESTAL SUPPORT BRACKET (OPT)
3	CONNECTING PLATE
4	PEDESTALS (ORDERED SEPARATELY)

Pedestal Support-Unflanged Trough



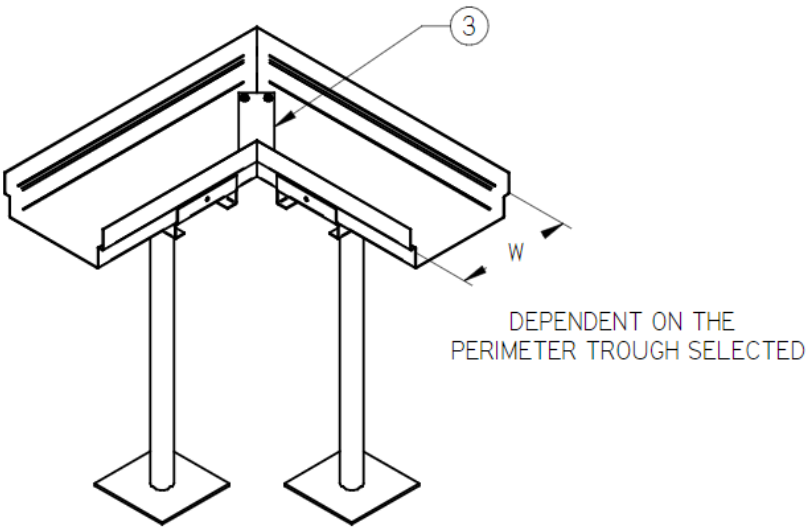
DIMENSIONAL DATA



	MIN	MAX
LENGTH	12 (305)	96 (2438)

90 Degree Mitered Corner

Pedestal supported



Panel supported

